

Query about Acronis Drive Monitor Report

Page 1 of 4

Acronis Drive Monitor has been issuing warnings about the D: drive on my computer:

The screenshot shows the Acronis Drive Monitor application window. The main area displays a warning: "Disks: Disk health warning detected." Below this, it explains that disk health is monitored through the S.M.A.R.T. interface and provides a link to "Configure disks monitoring".

A list of disks is shown with their health status:

- Disk Western Digital WD10EZEX-60M2NAA0 Volumes: G: Capacity: 1000.20 GB Health: 100%
- Disk Western Digital WD2003FZEX-00Z4SA0 Volumes: H: Capacity: 2000.40 GB Health: 100%
- Disk Samsung SSD 850 EVO 500GB Volumes: C: Capacity: 500.11 GB Health: 100%
- Disk Western Digital WD2002FAEX-007BA0 Volumes: D: Capacity: 2000.40 GB Health: 46%**
- Disk Western Digital WD2003FZEX-00Z4SA0 Volumes: E: Capacity: 2000.40 GB Health: 100%
- Disk HGST HDN724030ALE640 Volumes: F: Capacity: 3000.59 GB Health: 100%

The "Events" tab is selected, showing a table of S.M.A.R.T. parameters:

Attribute name	Raw value	Value	Threshold	Status
Read Error Rate	0	200	51	OK
Spin-Up Time	3891	253	21	OK
Start/Stop Count	7063	93	0	OK
Reallocated Sectors Count	0	200	140	OK
Seek Error Rate	0	100	0	OK
Power-On Hours (POH)	22864	69	0	OK
Spin Retry Count	0	100	0	OK
Recalibration Retries	0	100	0	OK
Power Cycle Count	359	100	0	OK
Power-off Retract Count	318	200	0	OK
Load/Unload Cycle Count	6744	198	0	OK
Temperature	43	43	0	OK
Reallocation Event Count	0	200	0	OK
Current Pending Sector Count	0	200	0	OK
Uncorrectable Sector Count	27	200	0	Degradation
UltraDMA CRC Error Count	1091	200	0	OK
Write Error Rate/Multi-Zone Error Rate	18	200	0	OK

At the bottom left, there is a link: "See also: [More Acronis products](#)".

Query about Acronis Drive Monitor Report

Page 2 of 4

It seems the particular problem is an Uncorrectable Sector Count. I attempted to corroborate this with additional tests of this drive. Here is a report by The Piriform Speccy tool:

Piriform Speccy - Professional Edition

File View Help

- Summary
- Operating System
- CPU
- RAM
- Motherboard
- Graphics
- Storage
- Optical Drives
- Audio
- Peripherals
- Network

WDC WD2002FAEX-007BA0

Manufacturer: Western Digital
Form Factor: TB/3.5-inch (new format)
Business Unit/Brand: Desktop/WD Caviar
Heads: 16
Cylinders: 243,201
Tracks: 62,016,255
Sectors: 3,907,024,065
SATA type: SATA-III 6.0Gb/s
Device type: Fixed
ATA Standard: ATA8-ACS
Serial Number: WD-WCAY01020877
Firmware Version Number: 05.01D05
LBA Size: 48-bit LBA
Power On Count: 359 times
Power On Time: 952.7 days
Features: S.M.A.R.T., NCQ
Max. Transfer Mode: SATA III 6.0Gb/s
Used Transfer Mode: SATA III 6.0Gb/s
Interface: SATA
Capacity: 1863 GB
Real size: 2,000,398,934,016 bytes
RAID Type: None

S.M.A.R.T.

Status: Good
Temperature: 43 °C
Temperature Range: OK (less than 50 °C)

S.M.A.R.T attributes

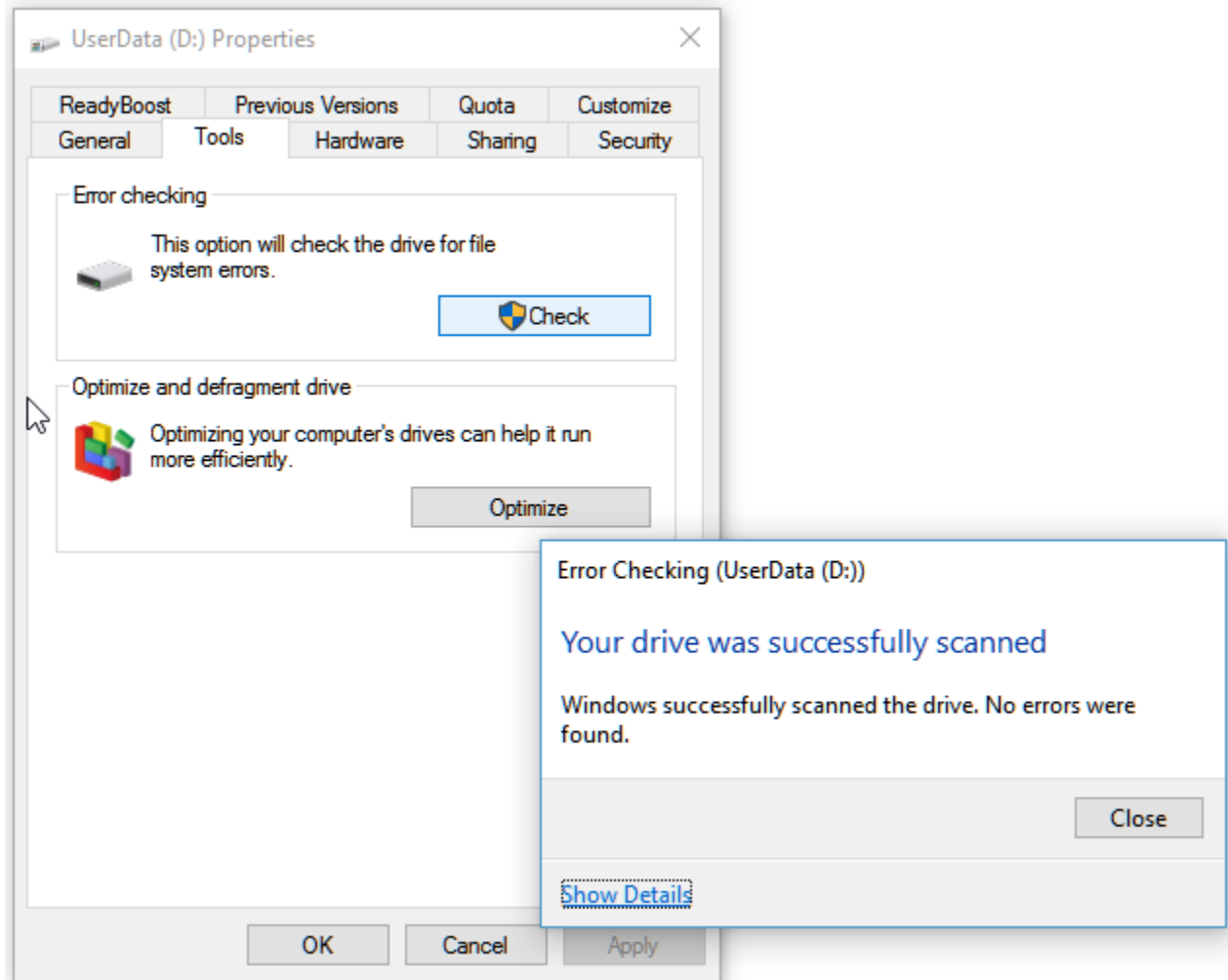
	Attribute name	Real value	Current	Worst	Threshold	Raw Value	Status
01	Read Error Rate	0	200	200	51	0000000000	Good
03	Spin-Up Time	3891 ms	253	253	21	000000F33	Good
04	Start/Stop Count	7,063	93	93	0	000001B97	Good
05	Reallocated Sectors Count	0	200	200	140	0000000000	Good
07	Seek Error Rate	0	100	253	0	0000000000	Good
09	Power-On Hours (POH)	952d 16h	69	69	0	0000005950	Good
0A	Spin Retry Count	0	100	100	0	0000000000	Good
0B	Recalibration Retries	0	100	100	0	0000000000	Good
0C	Device Power Cycle Count	359	100	100	0	0000000167	Good
C0	Power-off Retract Count	318	200	200	0	000000013E	Good
C1	Load/Unload Cycle Count	6,744	198	198	0	0000001A58	Good
C2	Temperature	43 °C	109	92	0	000000002B	Good
C4	Reallocation Event Count	0	200	200	0	0000000000	Good
C5	Current Pending Sector Count	0	200	200	0	0000000000	Good
C6	Uncorrectable Sector Count	27	200	200	0	000000001B	Good
C7	UltraDMA CRC Error Count	1,091	200	200	0	0000000443	Good
C8	Write Error Rate / Multi-Zone Error Rate	18	200	200	0	0000000012	Good

This tool shows the drive as healthy with no issues of concern.

Query about Acronis Drive Monitor Report

Page 3 of 4

I ran the Windows 10 Check Disk utility and get this result:



Going further, I listed these details:

