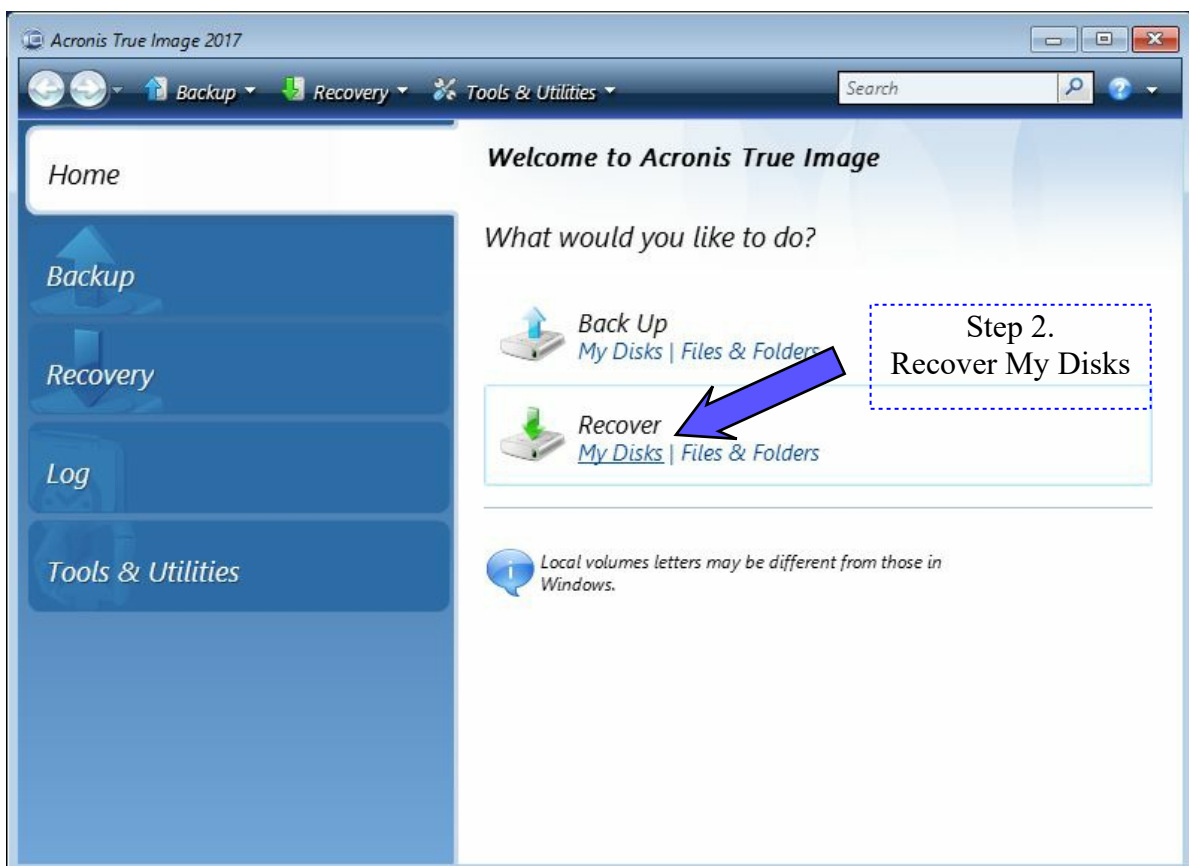
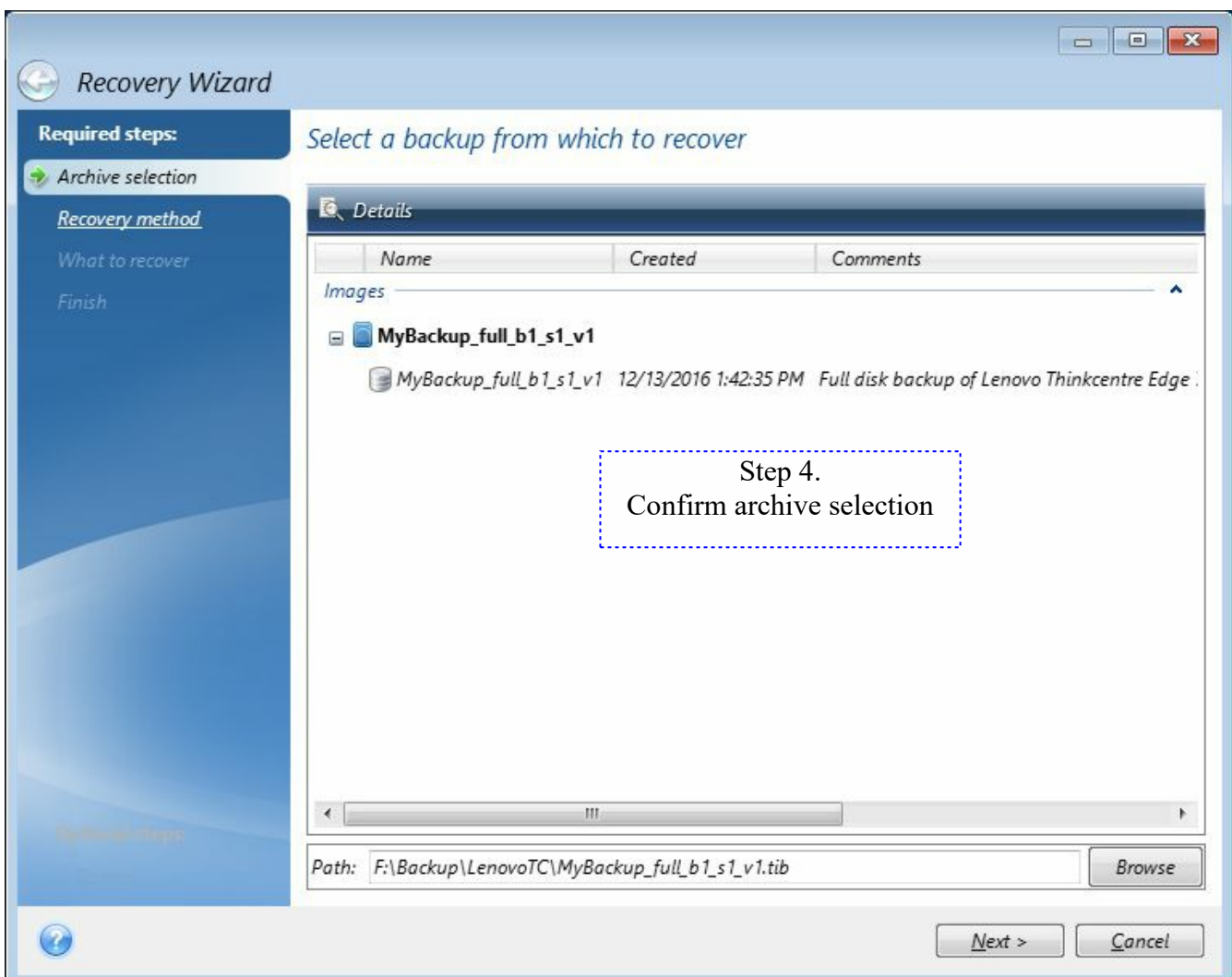
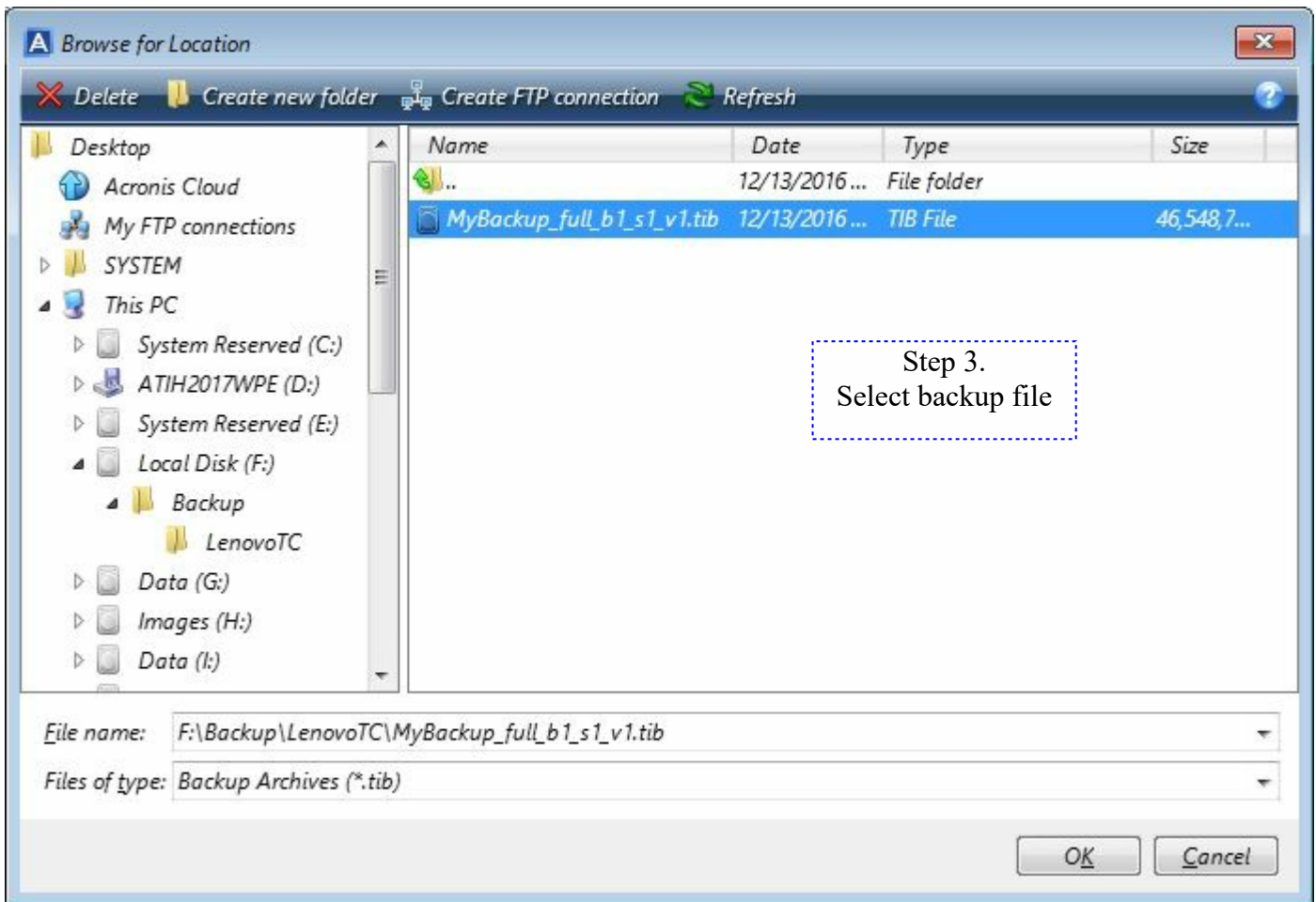


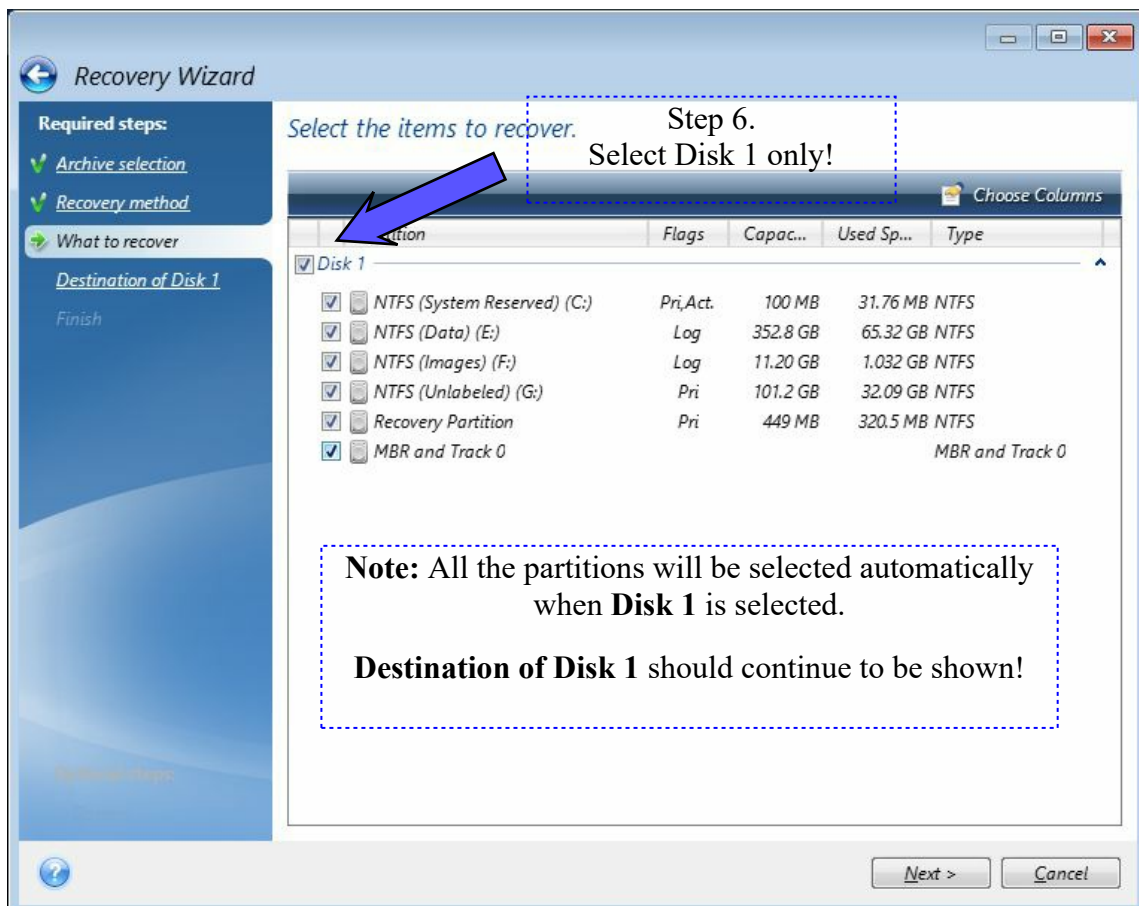
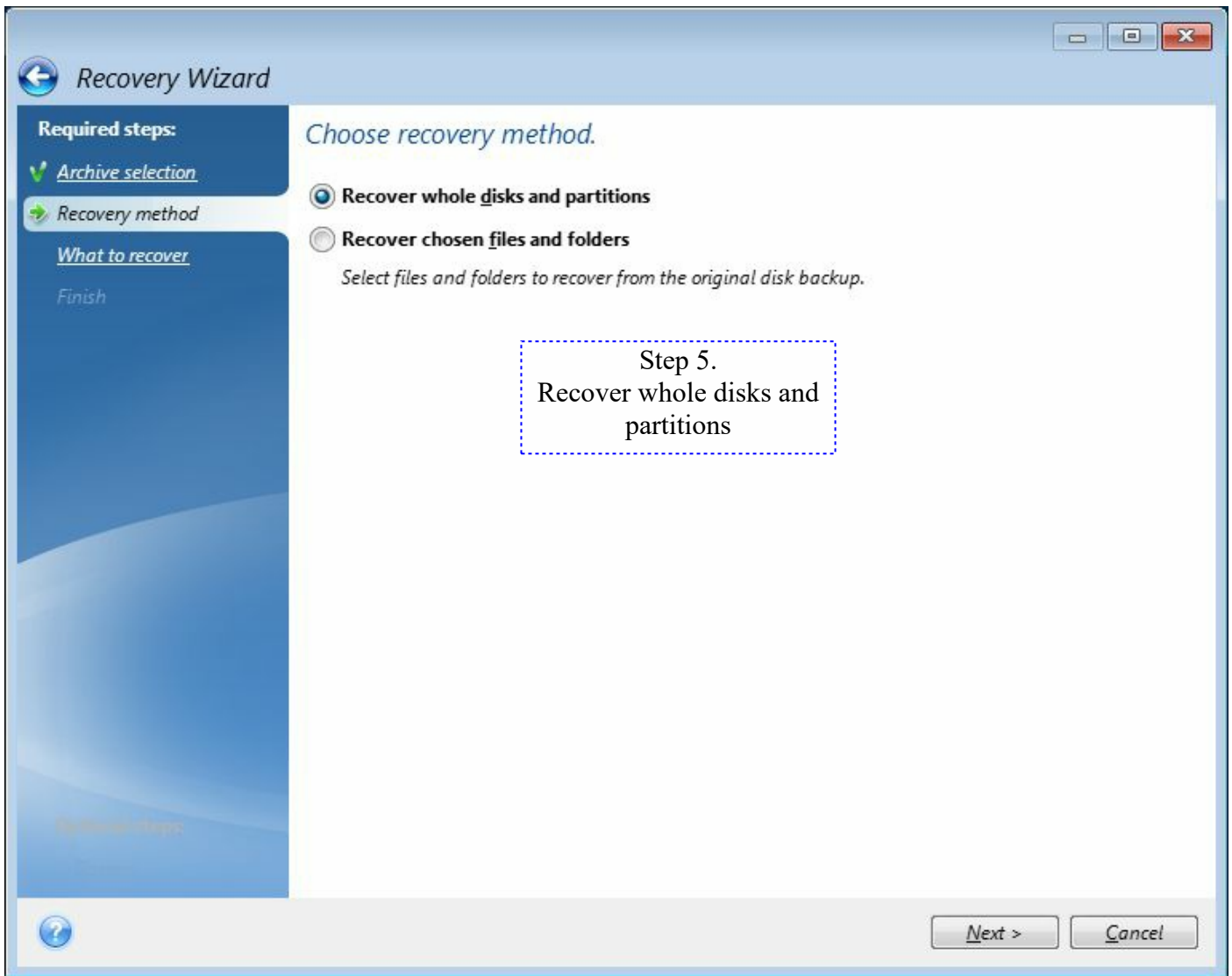
How to recover an entire disk backup

1. Create the [Acronis bootable Rescue Media](#) and boot the system from this with the external backup drive connected that contains the Acronis entire disk backup image .TIB file.
Note: The Rescue Media should be started in the same boot mode as used by Windows, i.e. [use UEFI or Legacy according to which Windows uses](#).
2. When the True Image application main page opens, select **Recover My Disks**
3. Navigate to and select the Acronis backup image .TIB file then click on **OK**.
4. Confirm that the Archive selection screen shows the correct, selected image file, click **Next**.
5. Select **Recover whole disks and partitions** on the Choose recovery method screen, click **Next**.
6. Select the top **Disk 1** option on the What to recover screen. Do not alter (select or deselect) any of the partitions shown below the Disk level. Click **Next**.
7. Select the destination disk from the options shown. Check the '**Recover disk signature**' as needed.
Note: some software activation requires this to be the same as when installed / activated.
8. If the destination disk already contains data or partitions, click **OK** on the warning message panel shown.
9. Review the Operations Summary screen to confirm that this shows the correct actions, click on **Proceed** if all is **OK**.
10. Wait while the Operation Progress panel works through the actions shown in the Operations Summary.
11. If all completes successfully, the Recover operation succeeded pop-up will be shown, click **OK**.
12. If any errors / problems occurred during the Restore / Recovery, check the **Log before** closing the Rescue Media / True Image application.

See screen shots of the above steps on the following pages.







Recovery Wizard

Required steps:

- Archive selection
- Recovery method
- What to recover
- Destination of Disk 1
- Finish

Optional steps:

- Options

Select destination of Disk 1

Disk properties

Drive	Capacity	Model	Interface
Disk 1	465.8 GB	WDC WD5000AAKX-001CA0	Serial ATA
Disk 2	14.46 GB	USB DISK 2.0 PMAP	USB
Disk 3	153.4 GB	WDC WD1600YD-01NVB1	USB
Disk 4	232.9 GB	WDC WD2500JB-00REA0	USB

Step 7.
Select correct destination disk

Recover disk signature

153.4 GB E: L: 33.25 GB NTFS N: Data (I:) 115.9 GB NTFS J:

Primary // Logical // Dynamic Acronis Secure Zone Unallocated // Unsupported

Next > Cancel

Acronis True Image

The destination hard disk drive you have chosen contains some partitions that could contain useful data. Hard disk drive image recovery is possible only if the destination hard disk drive is empty. Click OK to confirm deletion of all the partitions on the destination hard disk drive.

Step 8
Destination disk has data or partitions!

OK Cancel

