

Obtain file copies from TrueImage Home 2012 backup files.

There are multiple ways the copy process can be done from within the windows installed version. If using the TI bootable media CD, the only choice is the TI recovery/restore process.

1. Use the Explore option and copy/paste or drag copies from the backup file onto the target location.
2. Recover the file or folders using the Recovery/restore/recovery process.
3. If the backup file is a "disk & partition" file, it can be mounted using the provided Tools /Utilities "Mount" option.

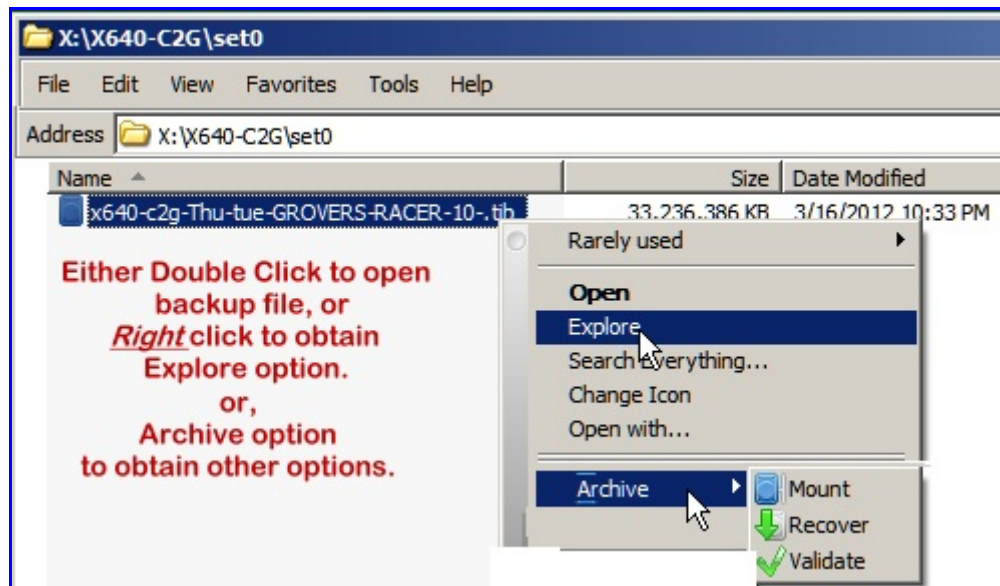


Figure 1

Figure 1: From within the Windows Explorer, browse to folder containing the backup file and double click on the full or incremental or differential file containing the desired files.

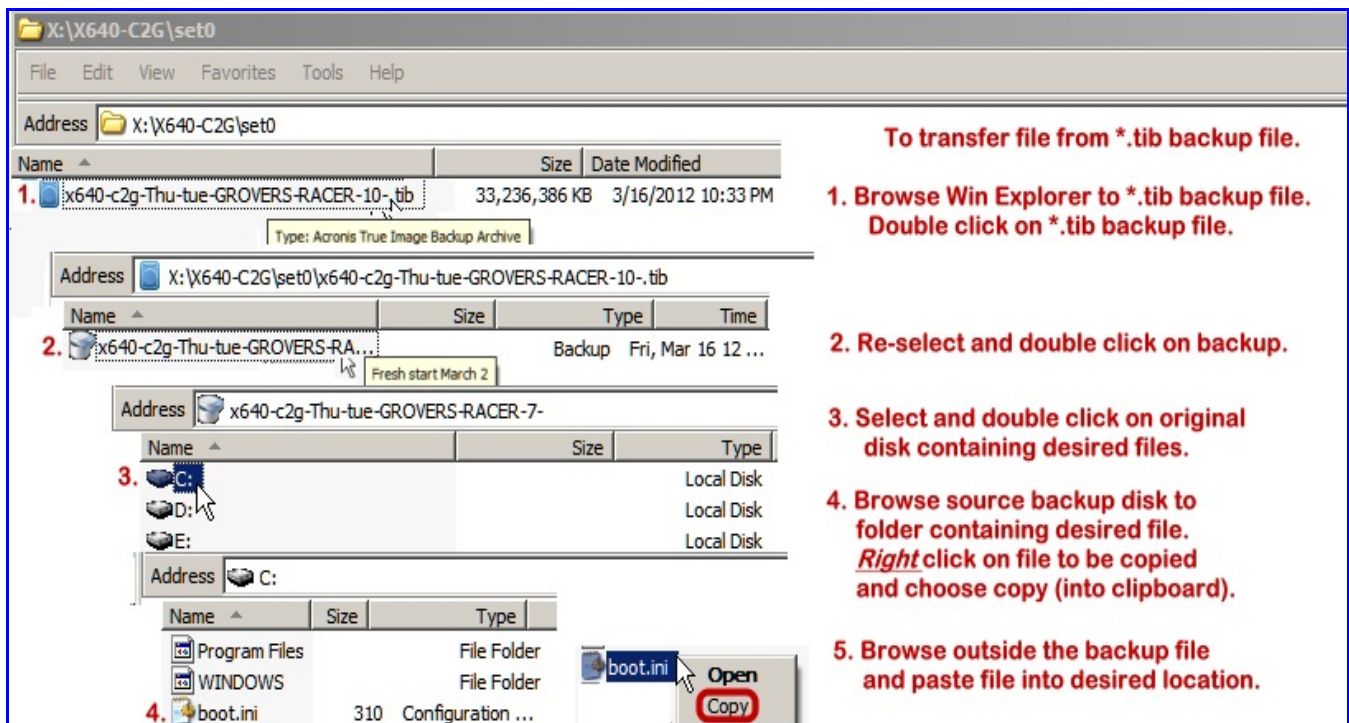


Figure 2

Figure 2 : Follow the instruction written within the screen capture. It is also possible to have both the target window and the backup source window open so you can drag the copies from the source direction onto the target window.

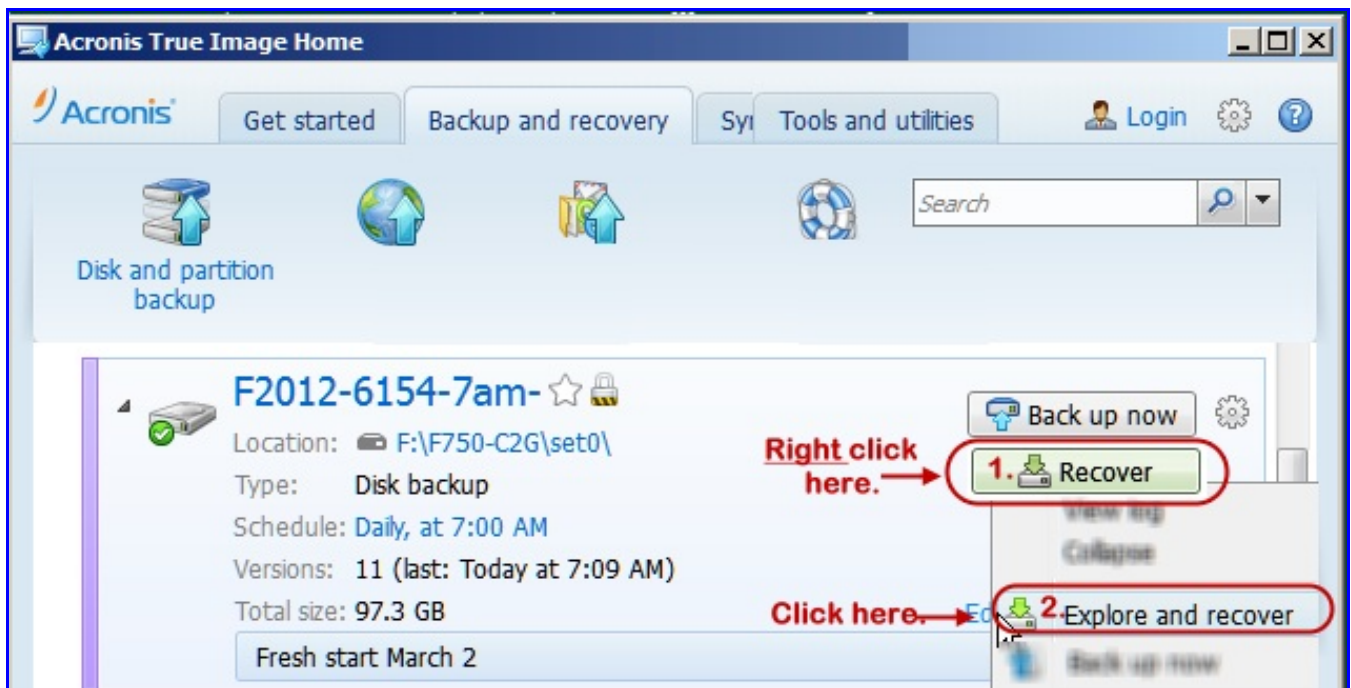


Figure 3

Figure 3: To use the file recovery option from within the TI program, open TrueImage and select the backup task containing the backup file which has the needed file(s),

1. **Right** click on the **Recover** option.
2. Dbl Click on the **Explore & Recover** option.

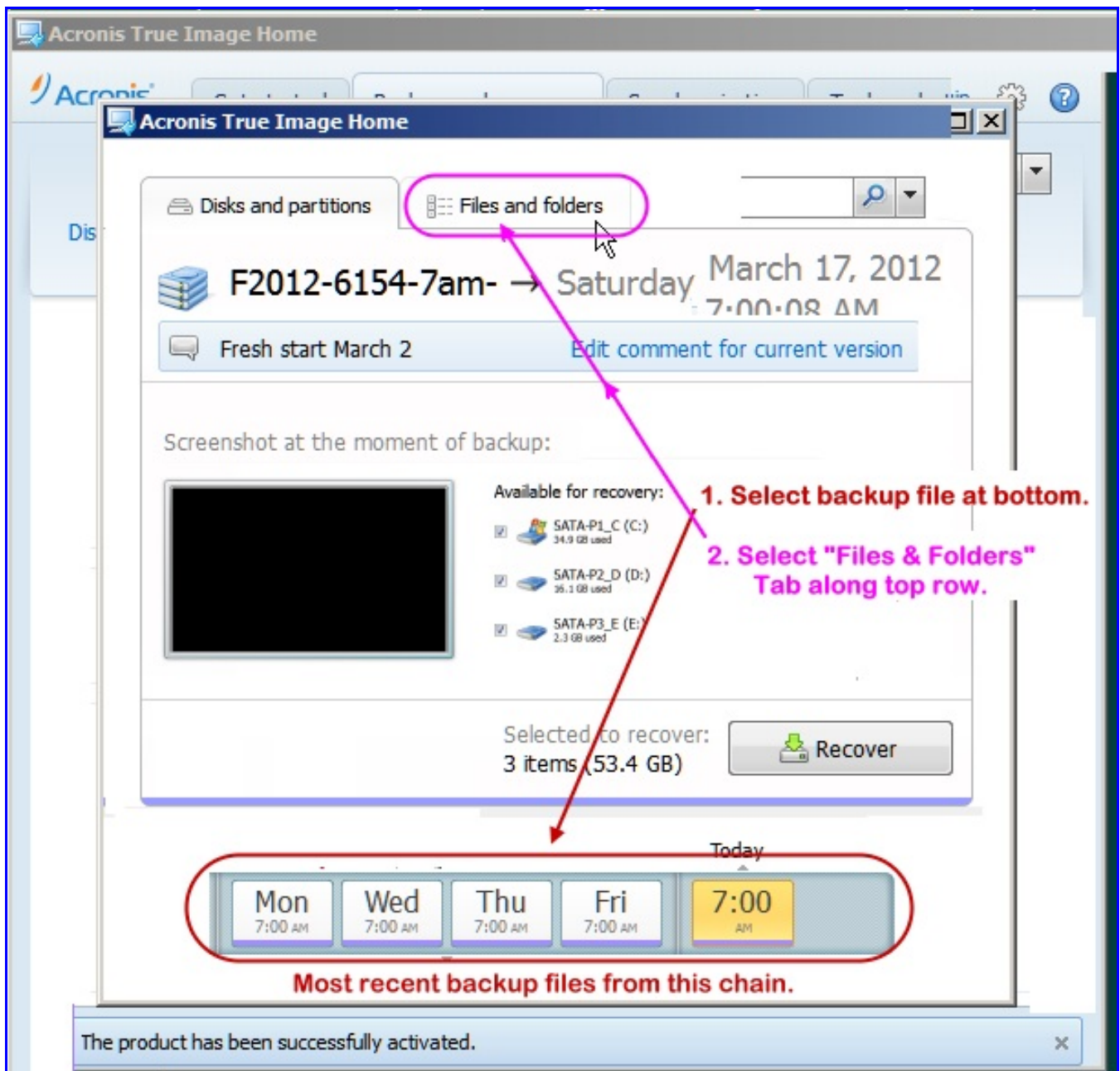


Figure 4

- Figure 4:
1. Along the bottom row the screen capture in figure 4, select the time slice containing the backup file containing the desired file. Hovering the mouse pointer over each time slice will indicate the type file such as full or ind/dif files.
 2. Double click on the **Files & Folders** tab on top row of screen capture.

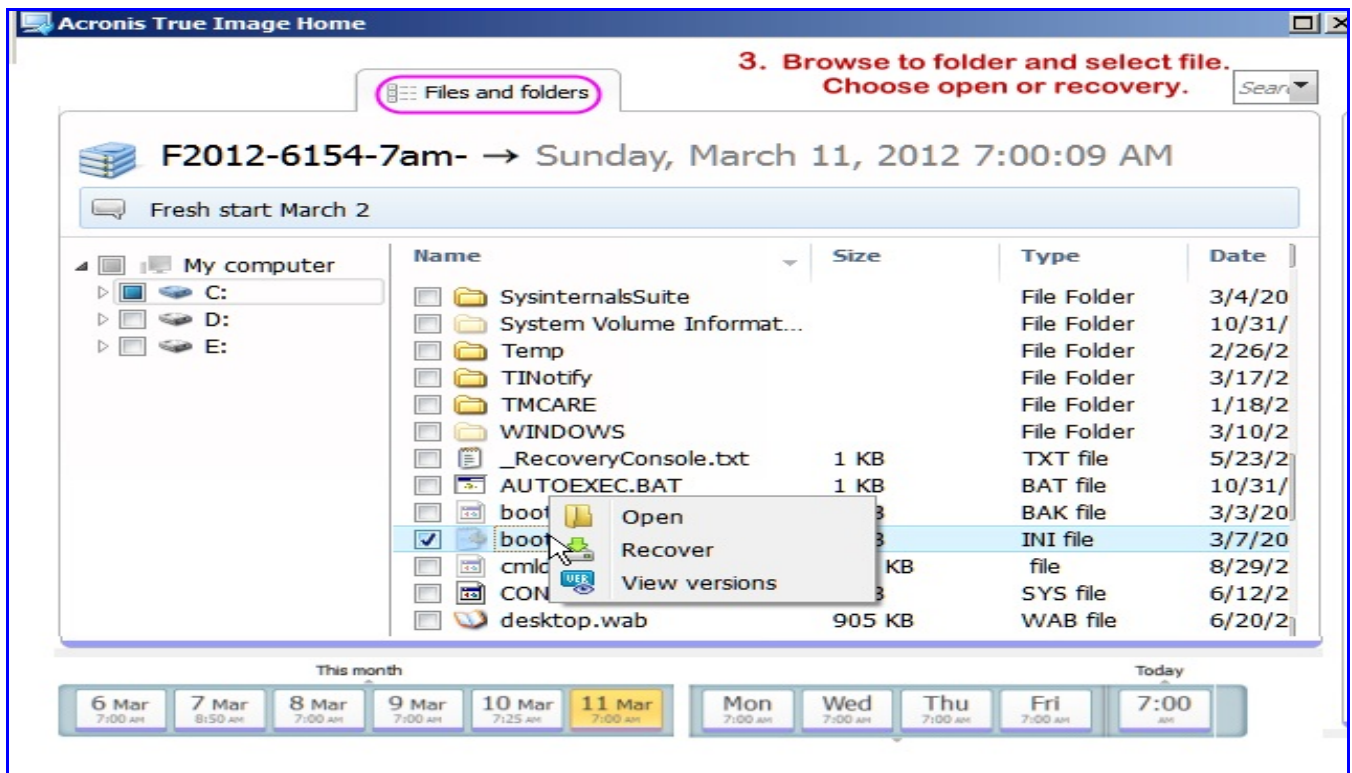


Figure 5

- Figure 5:
1. Do **not** check mark the disk or folder. Browse to the desired location and then check only the files or folders & files to be recovered.
 2. If you choose the open option (single file only), the files will open inside the default program used to open that specific file type

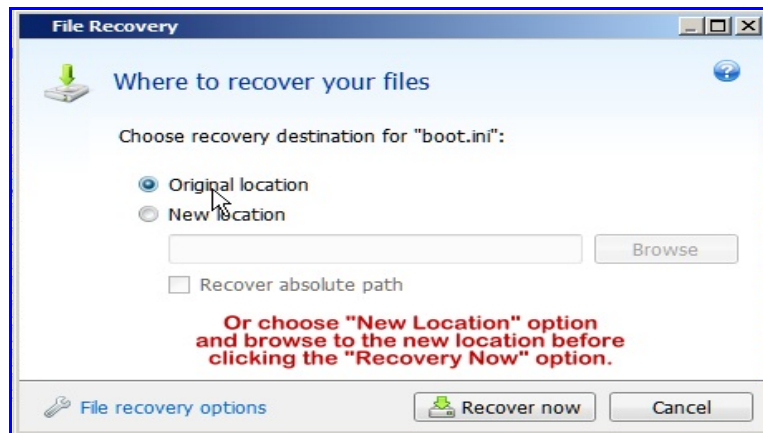


Figure 6

Figure 6: File recovery offers user choice of copy location.

Mount option

Create virtual disk copy of original disk.

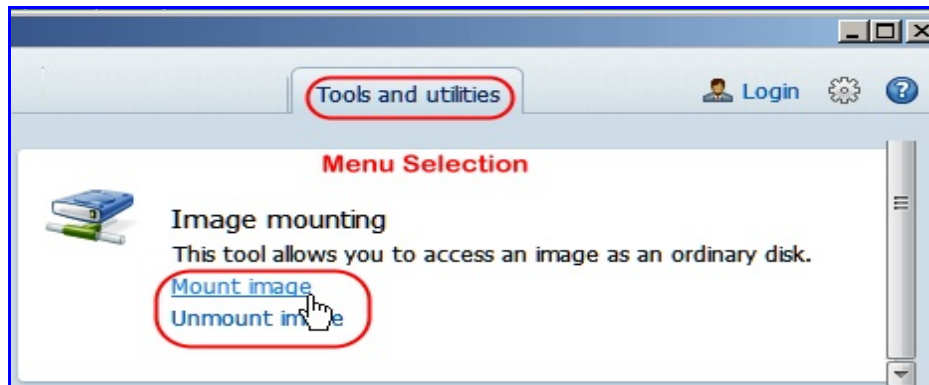


Figure 7

Figure 7: Select the "Mount" option from Tools & Utilities menu, or alternately from within Windows Explorer when Right clicking a *.tib backup file and choosing the archive /mount option.

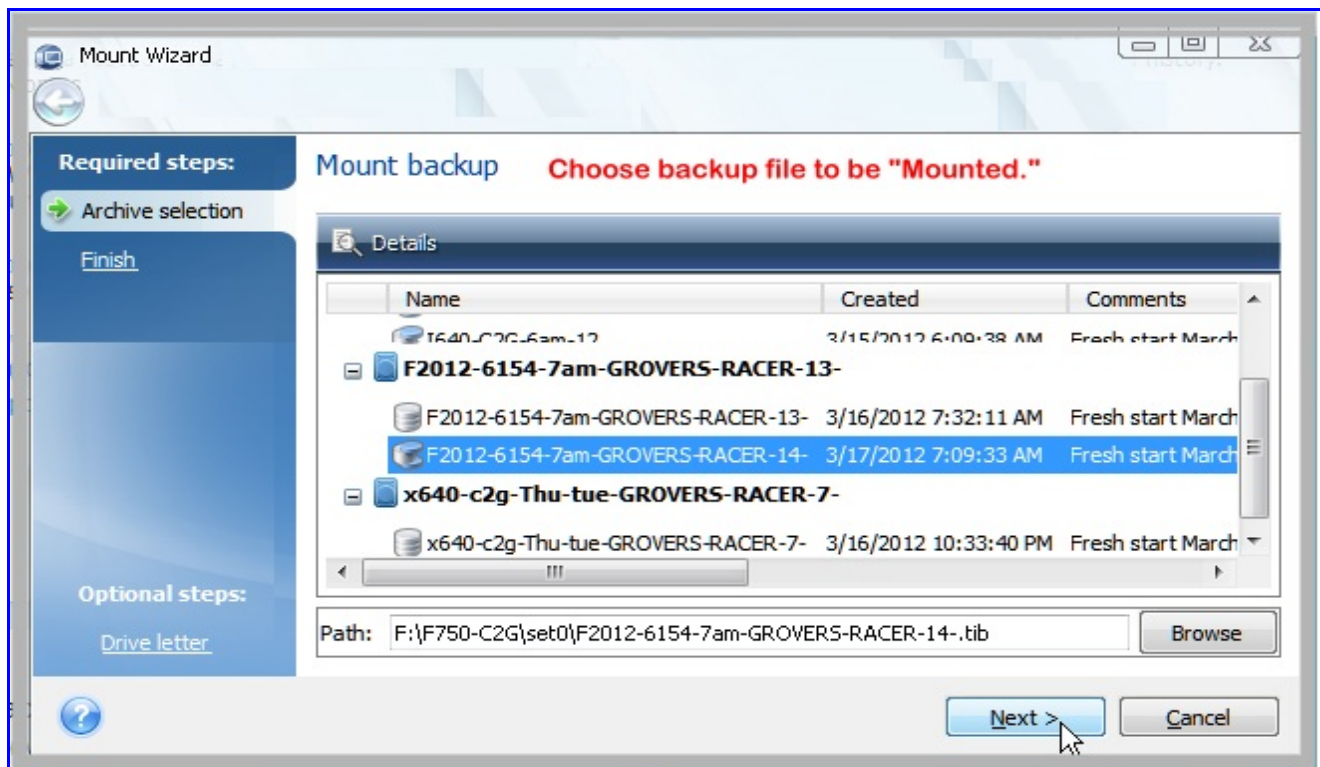


Figure 8

Figure 8: Choose backup file to be mounted.

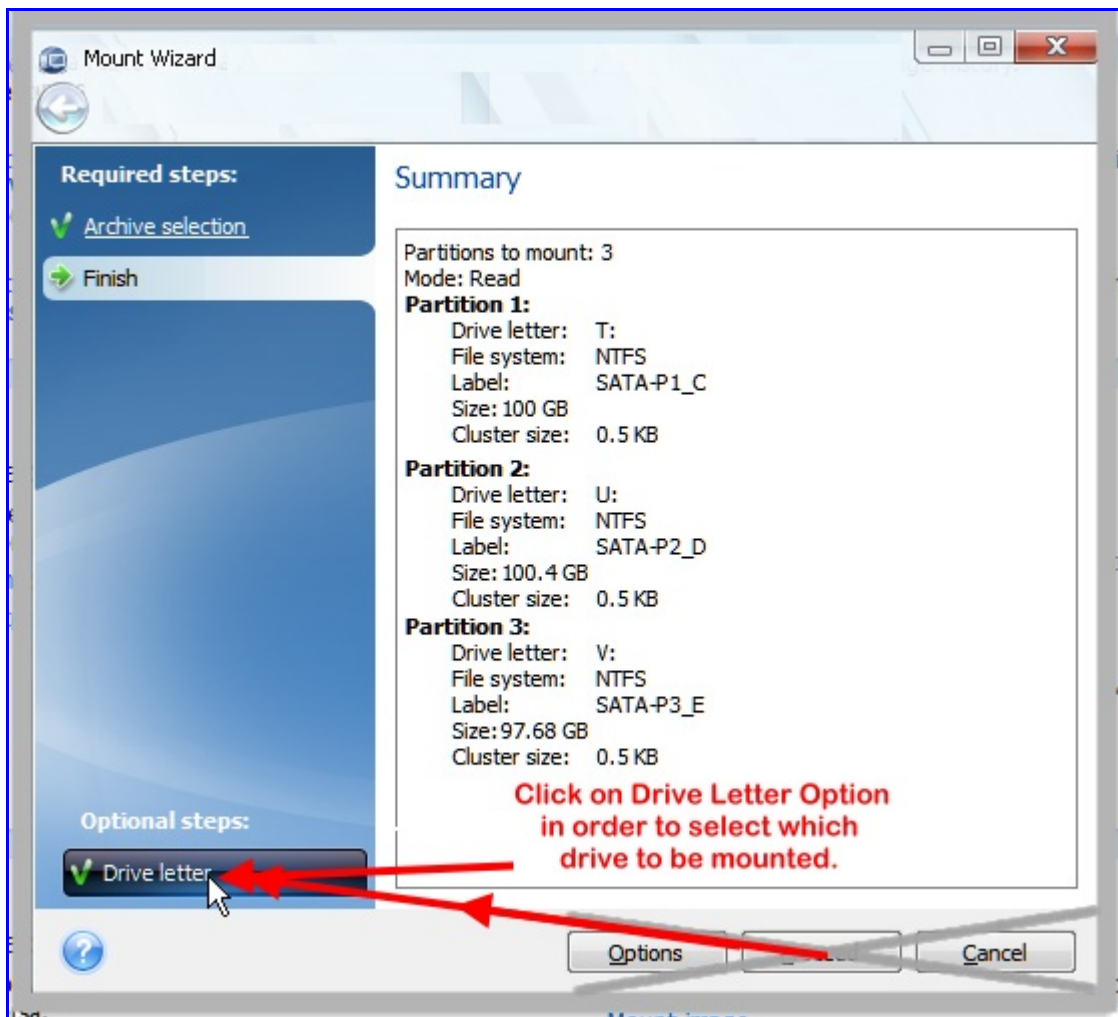


Figure 9

Figure 9: Click on Drive letter option in order to select which drive to be mounted.

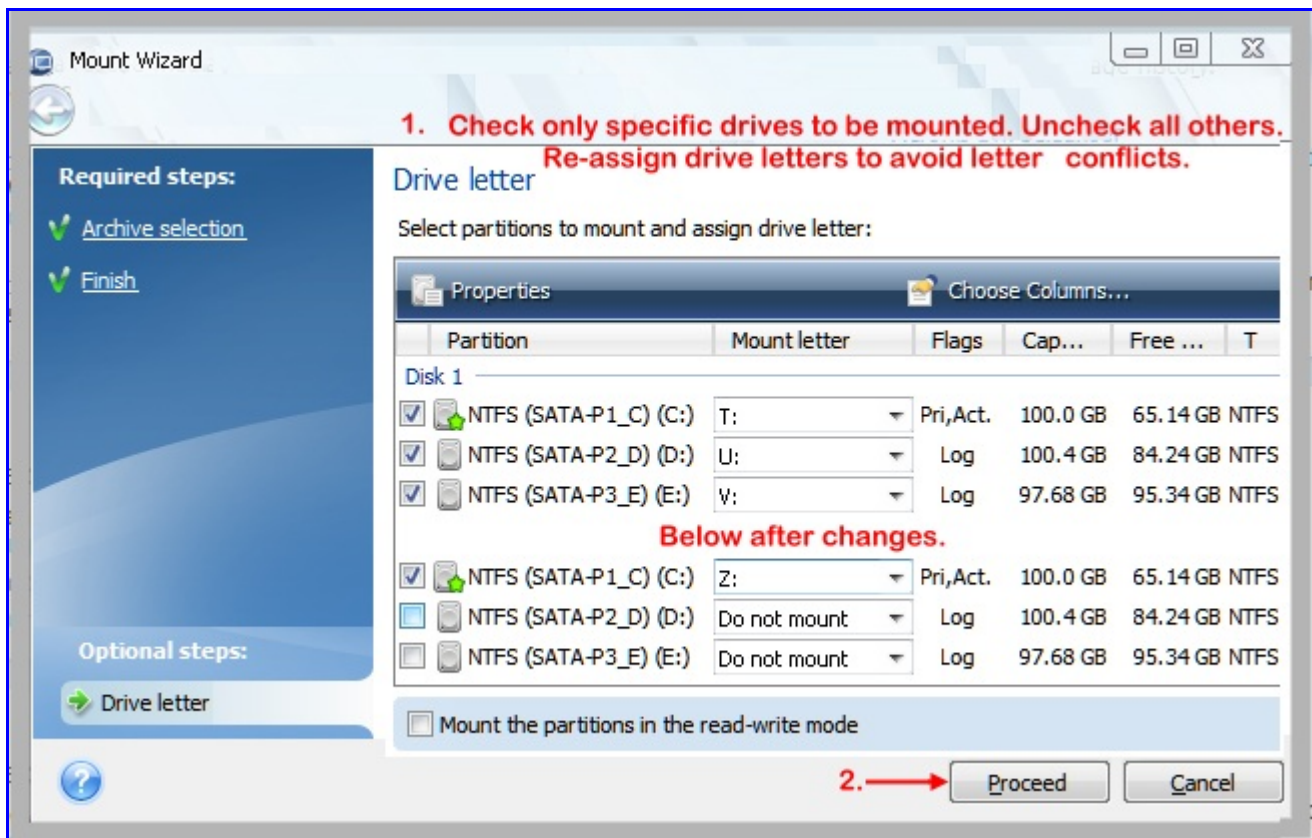


Figure 10

Figure 10: TrueImage will offer to mount all partitions which may not be good-especially if some are special system reserved partitions.

Uncheck all partitions not needed to be mounted. Also review the proposed drive letter assignment and change if needed. Be reminded of any external disks which might be affected by the proposed drive letters. Change letters if needed. Upon completion of file copy or restoration, use the "un-mount option to undo the letter assignment.

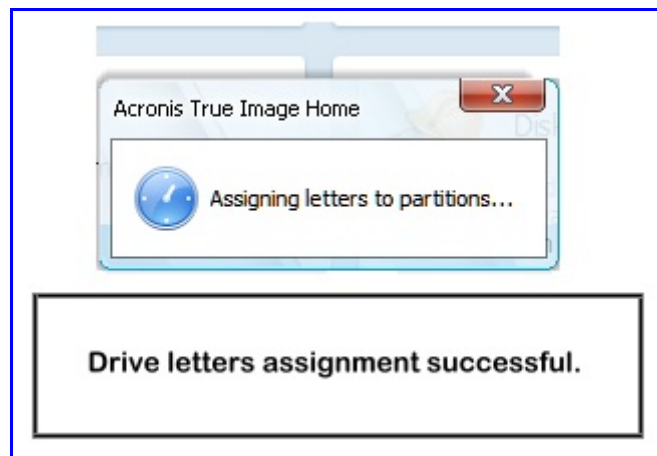


Figure 11

Figure 11: Upon completion of file copy or restoration, use the "un-mount" option to undo the letter assignment. The "unmount" option can be found on the "Tools and Utilities" Menu or alternately by Right clicking on the mounted drive letter and choose the "Unmount" option.

General:

A "files only" backup cannot be mounted. Only disk & partition backups can be mounted.

An easy copy method is to have two windows open and drag from the virtual disk to the actual real destination.

If additional information needed, check user manual or KB articles.

Illustrations by GroverH

March 19, 2012